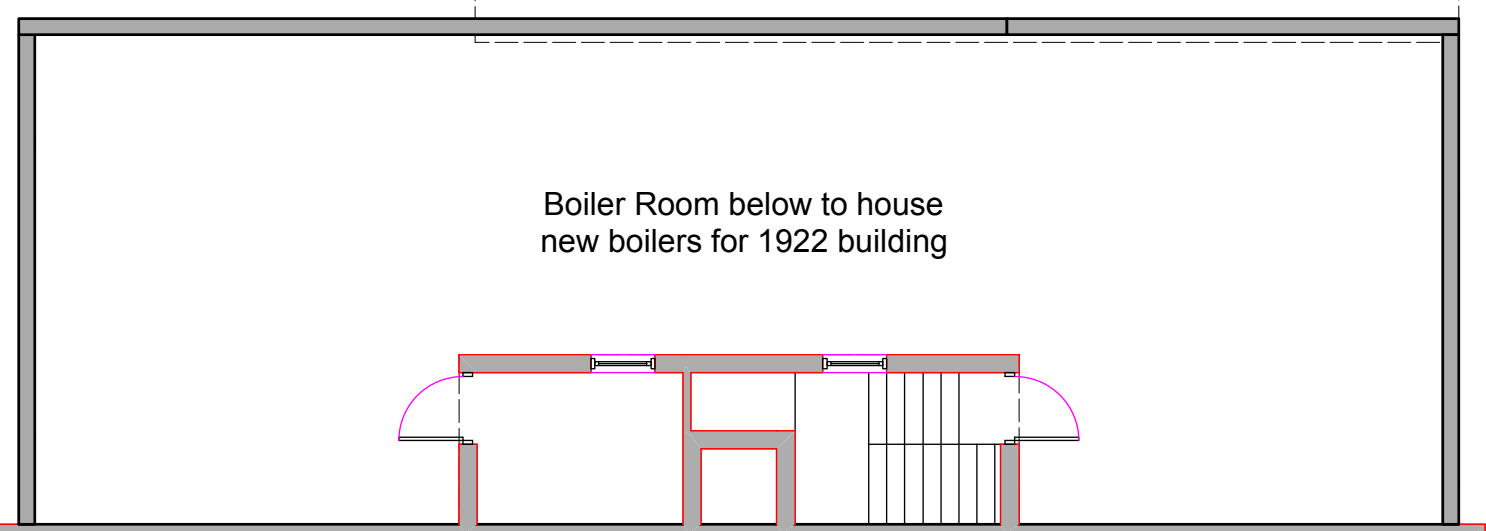
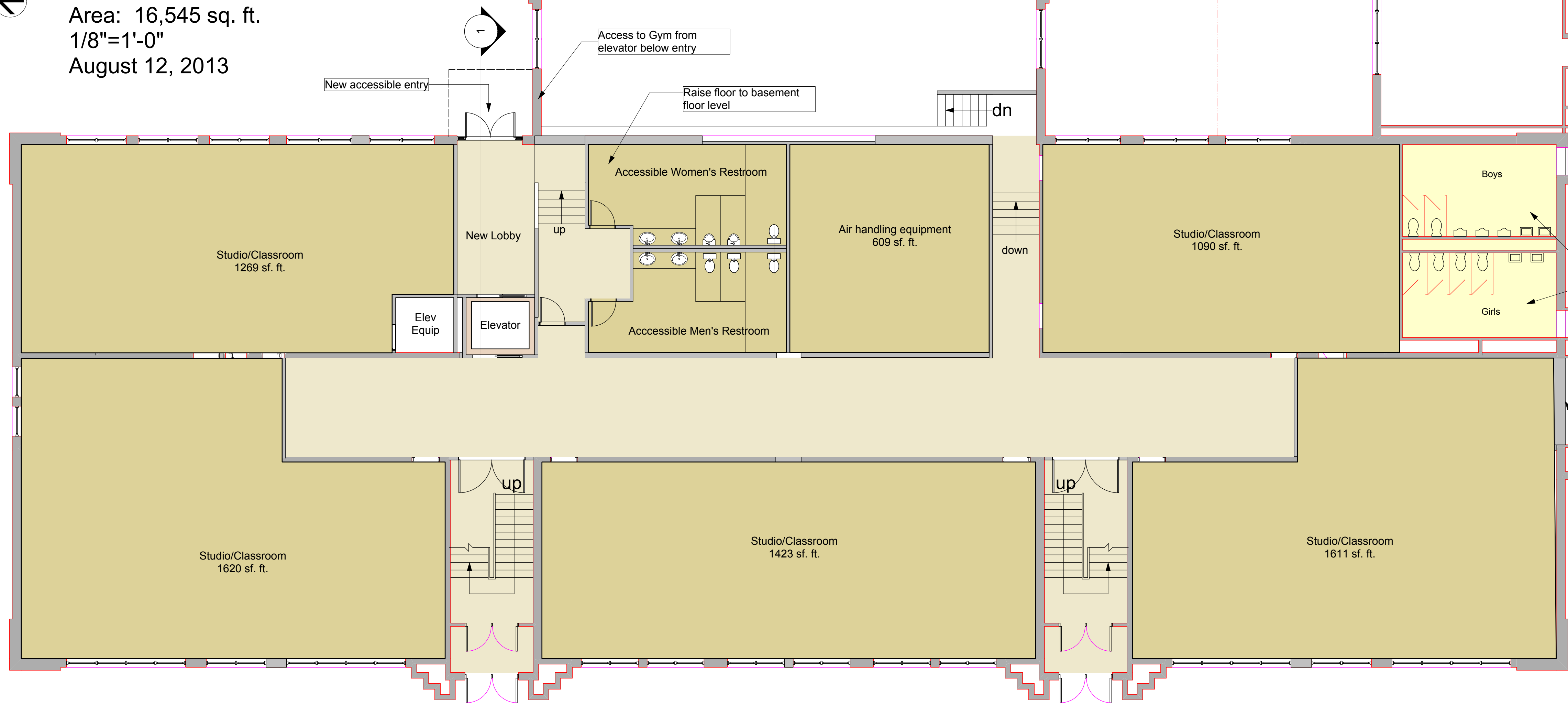
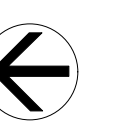


**Elevator Section 1**  
Scale: 1/8" = 1'-0"

Existing boiler room addition & boilers to be removed



**Annandale School  
Public Uses**  
Basement Floor Plan  
Area: 16,545 sq. ft.  
1/8"=1'-0"  
August 12, 2013



New accessible entry

Access to Gym from elevator below entry

Raise floor to basement floor level

dn

Restrooms remain for middle school use

Connection to Middle School closed

